

Before you begin

- Check for and read any README file on the CD-ROM because it may contain late-breaking information.
 - You will have the option of installing Adobe Acrobat Reader and Paint Shop Pro with the installation of AlphaNET™ 3.0. Simply click the appropriate yes or no response when the prompt to do so appears. Please note that you will not be able to view or print the manual located on the CD-ROM and in the software program unless you have Adobe Acrobat Reader installed on your PC.
 - You will also have the option of installing AlphaNET™ Training as well as the ability to use a Site Wizard to help you set up your first site. However, both will not run until after you have restarted your computer. Simply click the appropriate response when the prompt to do so appears. For more information on the Site Wizard, see “Using the Site Wizard” on page 3.
-

Printing the manual

There are two ways you can print the manual:

Before installing AlphaNET™ 3.0

1. Insert the AlphaNET™ 3.0 software CD-ROM into your CD drive. If the installation process starts automatically, click the *Cancel* button when the *Welcome* screen appears.
2. Using Windows® Explorer, open the CD-ROM drive folder and then double-click the **Manual.pdf** file. The manual will open in Adobe Acrobat Reader.
3. To print the manual, click the *Print* button.

You can also right-click on the **Manual.pdf** file and select *Print* from the pop-up menu.

After installing AlphaNET™ 3.0

Select *Start>Programs>AlphaNET>On-Line Manual* and, when the manual opens in Adobe Acrobat Reader, click the *Print* button.

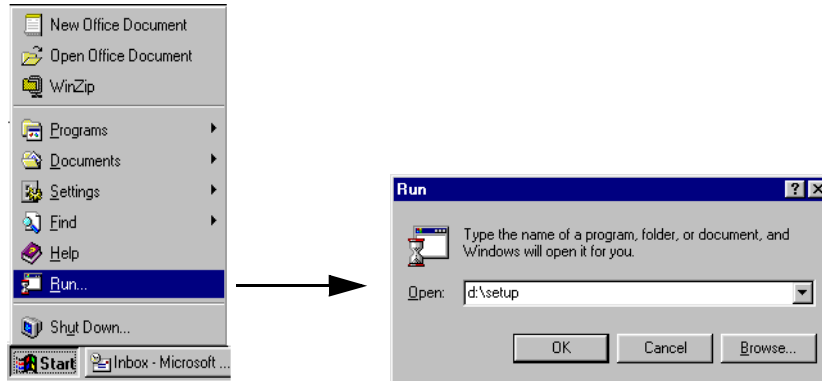
Online help is also available in the Help drop-down menus of AlphaNET™ 3.0.

Installing the software

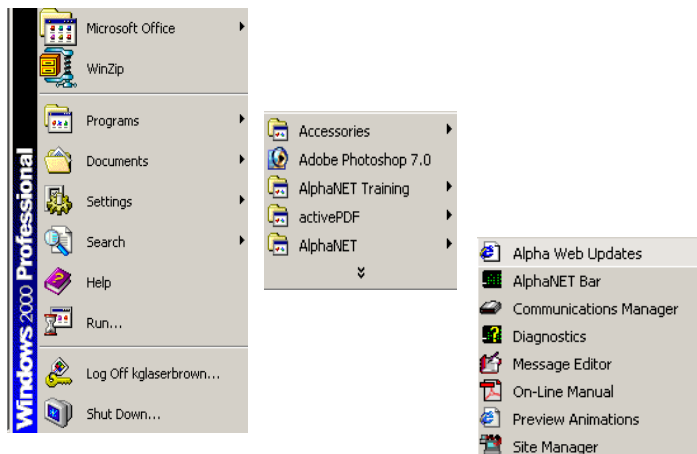
1. Start Microsoft Windows® software and be sure to have all other applications closed.
2. Insert the AlphaNET™ 3.0 software CD-ROM into your CD drive. The installation process will start automatically.

If installation does not start automatically, you can either:

- Select *Start>Run*. Next type *d:\setup* using the correct letter for your CD drive if not *d*. Then select *OK*.



- Using Windows® Explorer, double-click *Setup.exe* in your CD-ROM drive folder.
3. Follow the instructions when the installation program prompts you for a response.
 4. When the installation program is done, AlphaNET™ appears in your *Start* menu. If you select the AlphaNET™ bar (*Start>Programs>AlphaNET>AlphaNET Bar*), you will have access to *Message Editor*, *Site Manager*, *Communications Manager*, *Paint Shop Pro*, and *Paint Shop Pro Animation* at the click of a button. (If you clicked the appropriate box during the install, the AlphaNET™ bar appears automatically when you log onto your PC.)



Right-click anywhere in this area of the AlphaNET™ bar and select *Change Skin* to choose a different color scheme for the bar.

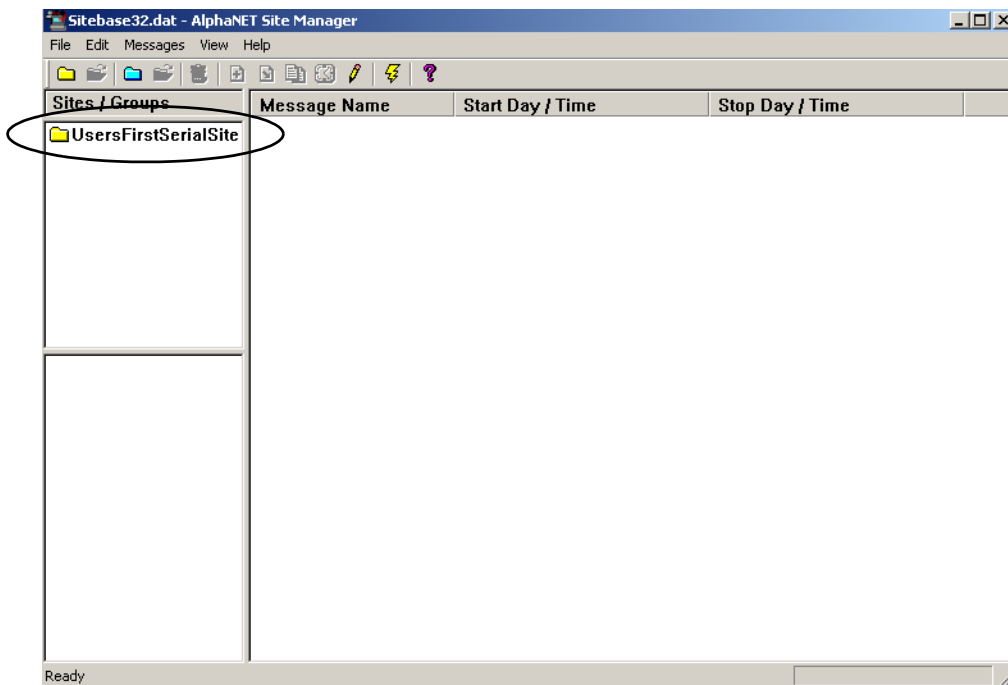


Using the Site Wizard

The Site Wizard only appears if you are installing AlphaNET™ software for the first time. Once you have installed AlphaNET 3.0, you will be prompted to restart your computer. After the restart, another prompt will appear asking if you want to use the Site Wizard to help you set up your first site in the software. If you opted to install AlphaNET™ training, the installation for that will run first.

Site Setup Wizard	
When you see this...	...do the following.
Would you like to use the Site Setup Wizard to create your first sign connection?	Click Yes .
How will you be communicating to your sign?	<ul style="list-style-type: none">• Select Serial, Modem, or TCP/IP.• Click Next.
The default communication settings are as follows:	<ul style="list-style-type: none">• Set the appropriate settings for your communication device.• Click Next.
What type of sign do you have?	<ul style="list-style-type: none">• Select your sign type from the drop-down list.• Type the number of columns and rows for the sign.• Select Single color or Full color.• Click Finish.
Note that the sign type you choose here determines the options available to you in AlphaNET 3.0. To change your sign type, select <i>Edit>Customize</i> in <i>Message Editor</i> .	

Once you complete the wizard, select *Start>Programs>AlphaNET>Site Manager*. The site you created appears under **Sites/Groups**. To change the site name, double-click the site or select *File>Open Site*:



See the AlphaNET™ version 3.0 User Manual (pn 9708-8081) for information on how to use AlphaNET™ 3.0.

