

Introduction

The Output Control Accessory for ALPHA signs with the Smart Alec option is a NEMA 2 interface which can be used with any one of the ALPHA 4000 or 7000 series signs in the table below.

ALPHA 4000 series signs	ALPHA 7000 series signs
4120C and 4120R	7120C
4160C and 4160R	7160C
4200C and 4200R	7200C
4240C and 4240R	

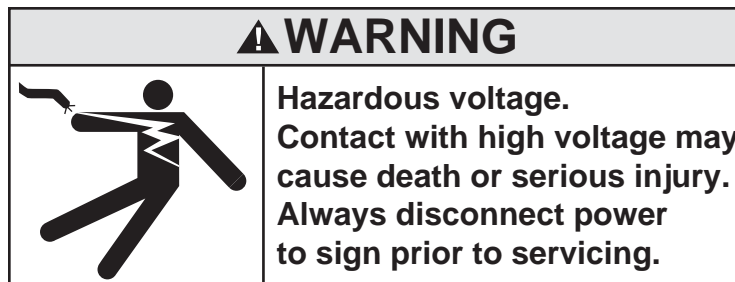
The Output Control Accessory is essentially a switch that can be used to provide power to a device such as a light, siren, etc. The switch in the Output Control Accessory is opened and closed using Smart Alec software.

Required tools and supplies

Tool/Supply	Part #	Function/Description
Phillips head screwdriver	—	General purpose.
Flat blade screwdriver with small bit (~ 1/8")	—	For attaching wires to Output Control Accessory.
Digital multimeter	—	Troubleshooting
Output Control Accessory kit	1066-2111	
Wires and conduit	—	As required to connect the Output Control Accessory to an output device.
Smart Alec software	various	To test the Output Control Accessory installation.

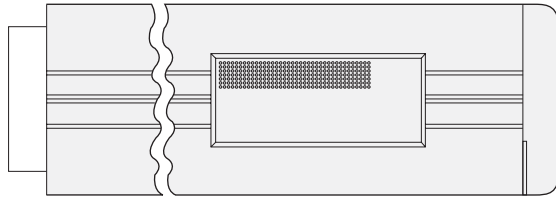
Installation instructions

Before installing the Output Control Accessory, remove power from the sign:



1. After removing power from the sign, placed the sign face first (i.e., the LED side) on a flat surface.

- Remove the two screws that hold the left end cap to the sign as shown below:

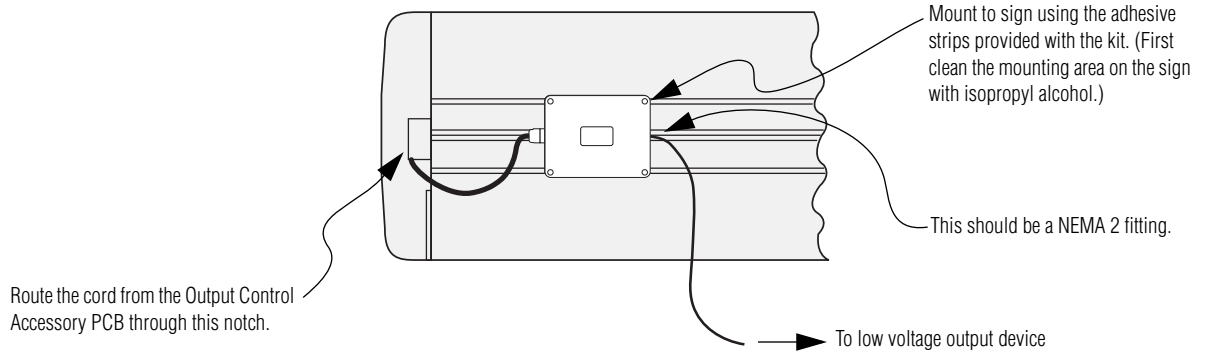


- Connect the Output Control Accessory as shown below:

4. Route the cord from the Output Control Accessory through the notch around the RS485 and RS232 jacks. Re-attach the end cap to the sign. Then mount the Output Control Accessory according to the following diagrams:

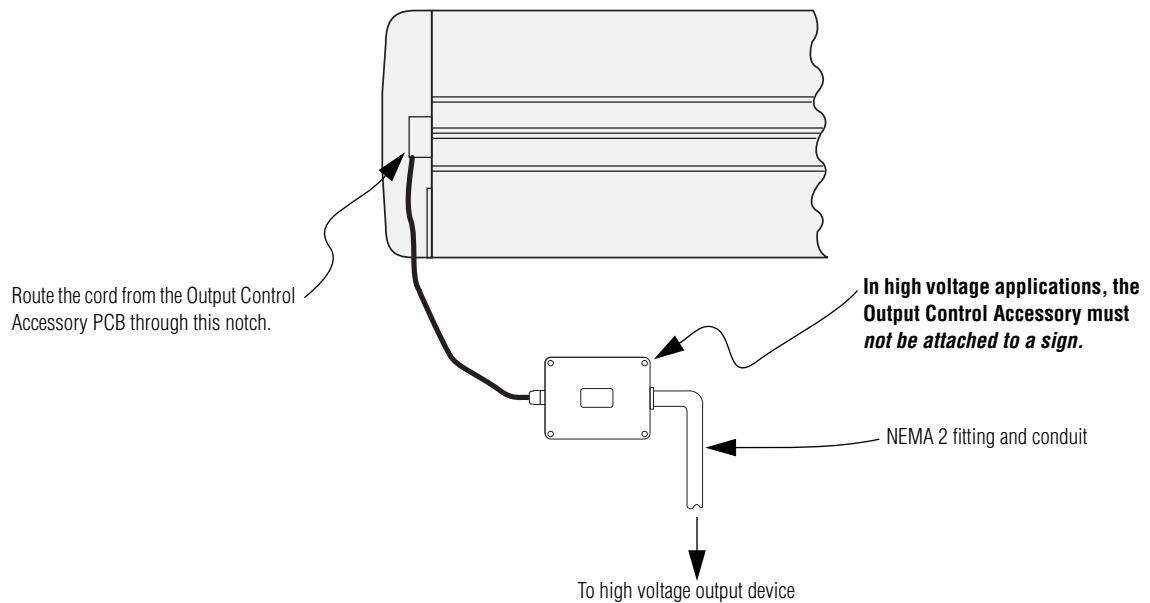
Low voltage mounting diagram

For use with a *UL Class 2 Low Voltage Output Device*, the Output Control Accessory can be mounted directly on the sign using the two adhesive strips that came with the kit:



High voltage mounting diagram

For high voltage applications, the Output Control Accessory **must be mounted away from the sign**. Also, use the appropriate conduit and wire to connect the Output Control Accessory to the output device:



Checkout procedure

The following procedure assumes that you have already installed and set up the Smart Alec software. Follow these steps to determine if the Output Control Accessory and output device have been installed correctly:

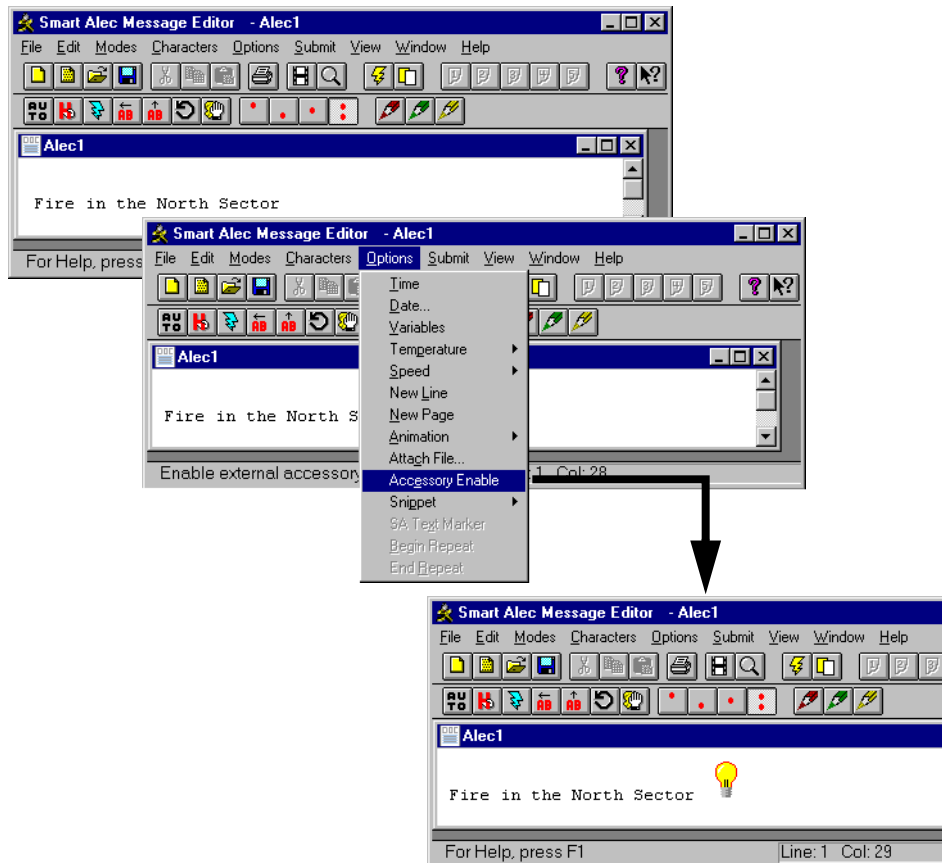
1. After installing the Output Control Accessory and connecting an output device to the unit, attach the sign to a Smart Alec network. Use the software to create a Location for the sign.
2. Run the **Smart Alec Editor** program.
3. Type in a new message. Then select **Options** and **Accessory Enable**:

Run the **Editor**.

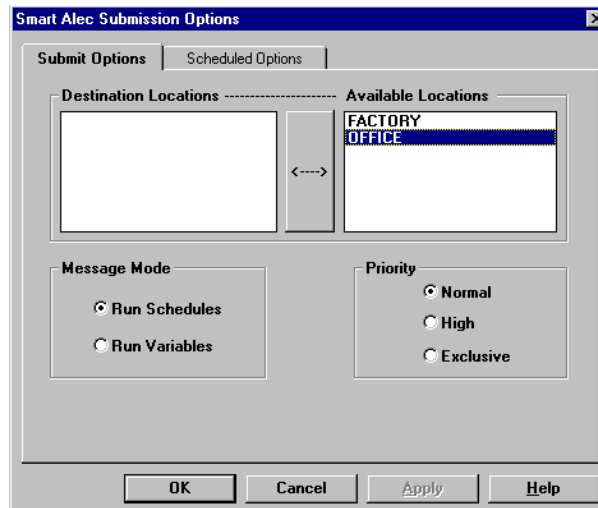
Type in some text.

Select **Options**

and then **Accessory Enable**

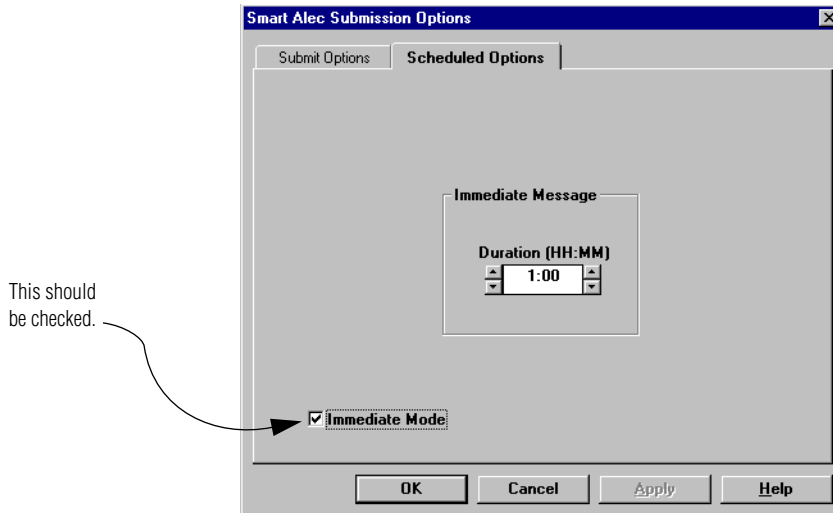


4. Next, click on  and select the sign's location:



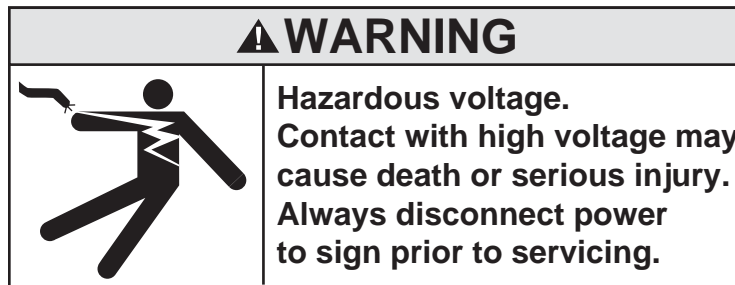
These are example locations.

5. Select **Scheduled Options** and then be sure that **Immediate Mode** is checked:



6. After selecting **OK**, your message will be sent. If the output device attached to the Output Control Accessory does not respond in a few minutes, perform the procedure described in "Troubleshooting".

Troubleshooting



1. Remove power from the output device and the sign.
2. Remove the top of the Output Control Accessory and disconnect the output device.
3. Using a digital multimeter, repeat steps 2 through 5 above. The software should close the Output Control Accessory switch and make the resistance across the POWER and LOAD output = 0 ohms:

